



Elektrotechnische Fabrik  
GmbH & Co. KG

Bevertalstraße 20  
D-42499 Hückeswagen  
Tel.: +49 2192 9166 0  
Fax: +49 2192 9166 66

### Mounting

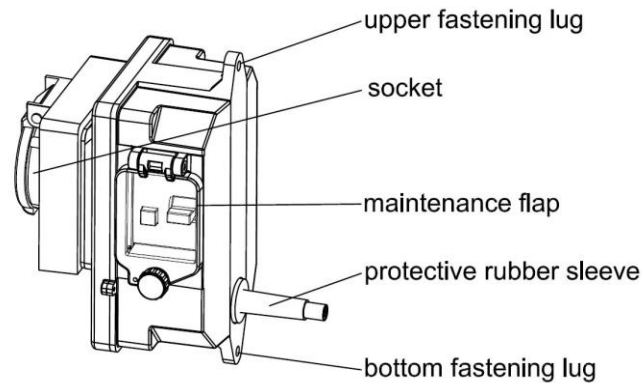
- Drill a hole with  $\varnothing 11$  mm for the connection cable
- Insert the connection cable through the hole
- Adjust the pole mount socket and press it against the pole
- Fasten the pole mount socket to the pole with the two drilling screws (4,8 x 22; SAF8)

### Connection

- Insert the connecting cable into the cable fuse box and connect according to the cable assignment

### Maintenance

- Open the maintenance flap using the knurled screw
- Switch on protective switch (RCD /RCCB; RCBO) again
- Close maintenance flap properly



## Installation Instructions

Pole mount socket HSW 4046

### Intended use

The pole mount socket HSW 4046 is intended to add-on to a suitable lighting poles.  
Any other use of this product requires the consultation with the manufacturer.

### Safety instructions

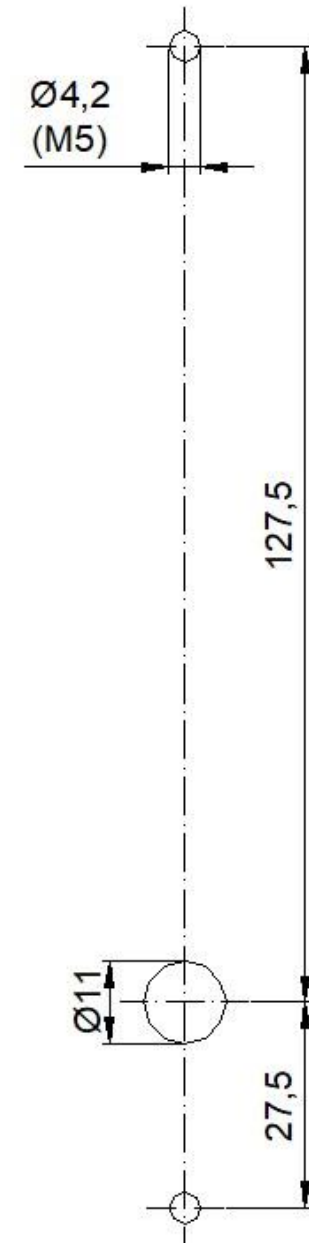
When working on electrical systems, the valid regulations such as VDE 0100 must be observed. Installation may only be carried out by qualified personnel or instructed persons in a de-energized state.

### Service

In the event of malfunctions or complaints regarding the product, please contact your sales representative or the manufacturer.

### Technical data

Socket	Swiss standard outlet type 23 / IP55
Standard	SN441011
Nominal voltage / -current	250 V / 16 A
Degree of protection	IP55
Measurements (L x W x H)	168 x 106 x 110 mm



drill pattern  
scale 1:1