



Elektrotechnische Fabrik
GmbH & Co. KG

Bevertalstraße 20
D-42499 Hückeswagen
Phone: +49 2192 9166 0
Fax: +49 2192 9166 66

Installation Instructions

Cable fuse box HSW 1194

Intended use

The cable fuse box HSW 1194 is intended to be used in suitable lighting poles.

The cable fuse box HSW 1194 is designed for the connection of max. 2 underground cables.

Any other use of this product requires the consultation with the manufacturer.

Safety instructions

When working on electrical systems, the valid regulations such as VDE 0100 must be observed. Installation may only be carried out by qualified personnel or instructed persons in a de-energized state.

Service

In the event of malfunctions or complaints regarding the product, please contact your sales representative or the manufacturer.

Technical data

Nominal voltage / -current	400 V / 16 A
Degree of protection	IP55
Protection class	II
Fuses	1 x D01 (E14) 16 A / 400 V
Measurements (L x W x H)	160 x 59 x 43 mm
Pole internal diameter	from Ø 70 mm
Door size	60 x 200 mm
Entry field for wire connection	48 mm
Input connectors	max. 2 cables 5 x 6 mm ²
Output connectors	max. 1 cable 3 x 2,5 mm ²

Mounting in lighting poles

- Remove housing cover
- Remove bridge clamp
- Insert the cable fuse box into open lighting pole and fasten it to the mounting rail

Adjust input seal

- Cut out the input seal (onion ring seal) at the embossed points according to the number and diameter of the input cables.

Connecting the input cable

- Strip the input cable and remove the filling material
- Insert the input cable so that the outer sheath extends into the connection compartment
- Snap on bridge clamp and screw tight
- Bending, shortening and stripping cable conductors to suit
- Insert the cable cores into the terminals and fasten them according to the terminal assignment (torque max. 0,8 Nm)

Connecting the output cable

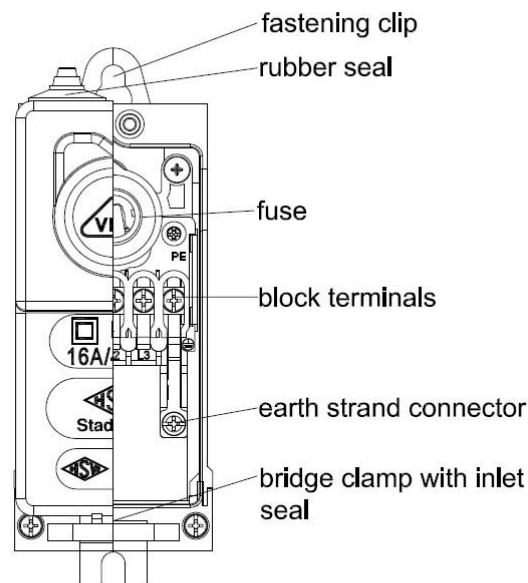
- Cut off the nipple of the outlet seal to be used
- Slide outlet seal over output cable
- Strip output cable
- Insert the outlet seal with output cable into the slot of the cable fuse box
- Pull the output cable back a little so that the outgoing seal is in full contact with the cable
- Shortening and stripping cable conductors to suit
- Connect the cable cores to the output terminals of the insert (torque max. 0,8 Nm)

Assembly

- Fit housing cover and screw it tight

Changing fuse inserts

- Remove housing cover
- Remove screw caps and change fuse insert





Elektrotechnische Fabrik
GmbH & Co. KG

Bevertalstraße 20
D-42499 Hückeswagen
Phone: +49 2192 9166 0
Fax: +49 2192 9166 66

Installation Instructions

Cable fuse box HSW 1194

Intended use

The cable fuse box HSW 1194 is intended to be used in suitable lighting poles.

The cable fuse box HSW 1194 is designed for the connection of max. 3 underground cables.

Any other use of this product requires the consultation with the manufacturer.

Safety instructions

When working on electrical systems, the valid regulations such as VDE 0100 must be observed. Installation may only be carried out by qualified personnel or instructed persons in a de-energized state.

Service

In the event of malfunctions or complaints regarding the product, please contact your sales representative or the manufacturer.

Technical data

Nominal voltage / -current	400 V / 16 A
Degree of protection	IP55
Protection class	II
Fuses	1 x D01 (E14) 16 A / 400 V
Measurements (L x W x H)	160 x 59 x 43 mm
Pole internal diameter	from Ø 70 mm
Door size	60 x 200 mm
Entry field for wire connection	48 mm
Input connectors	max. 2 cables 5 x 6 mm ²
Output connectors	max. 1 cable 3 x 2,5 mm ²

Mounting in lighting poles

- Remove housing cover
- Remove bridge clamp
- Insert the cable fuse box into open lighting pole and fasten it to the mounting rail

Adjust input seal

- Cut out the input seal (onion ring seal) at the embossed points according to the number and diameter of the input cables.

Connecting the input cable

- Strip the input cable and remove the filling material
- Insert the input cable so that the outer sheath extends into the connection compartment
- Snap on bridge clamp and screw tight
- Bending, shortening and stripping cable conductors to suit
- Insert the cable cores into the terminals and fasten them according to the terminal assignment (torque max. 1,2 Nm)

Connecting the output cable

- Strip the output cable, shortening and stripping cores
- Insert the output cable through the cable gland
- Screw the pressure nut together until the seal set between nut and cable forms a small bead
- Connect the cable cores to the output terminals of the insert (torque max. 0,8 Nm) or to special components according to the cable assignment

Assembly

- Fit housing cover and screw it tight

Changing fuse inserts

- Remove housing cover
- Remove screw caps and change fuse insert

